

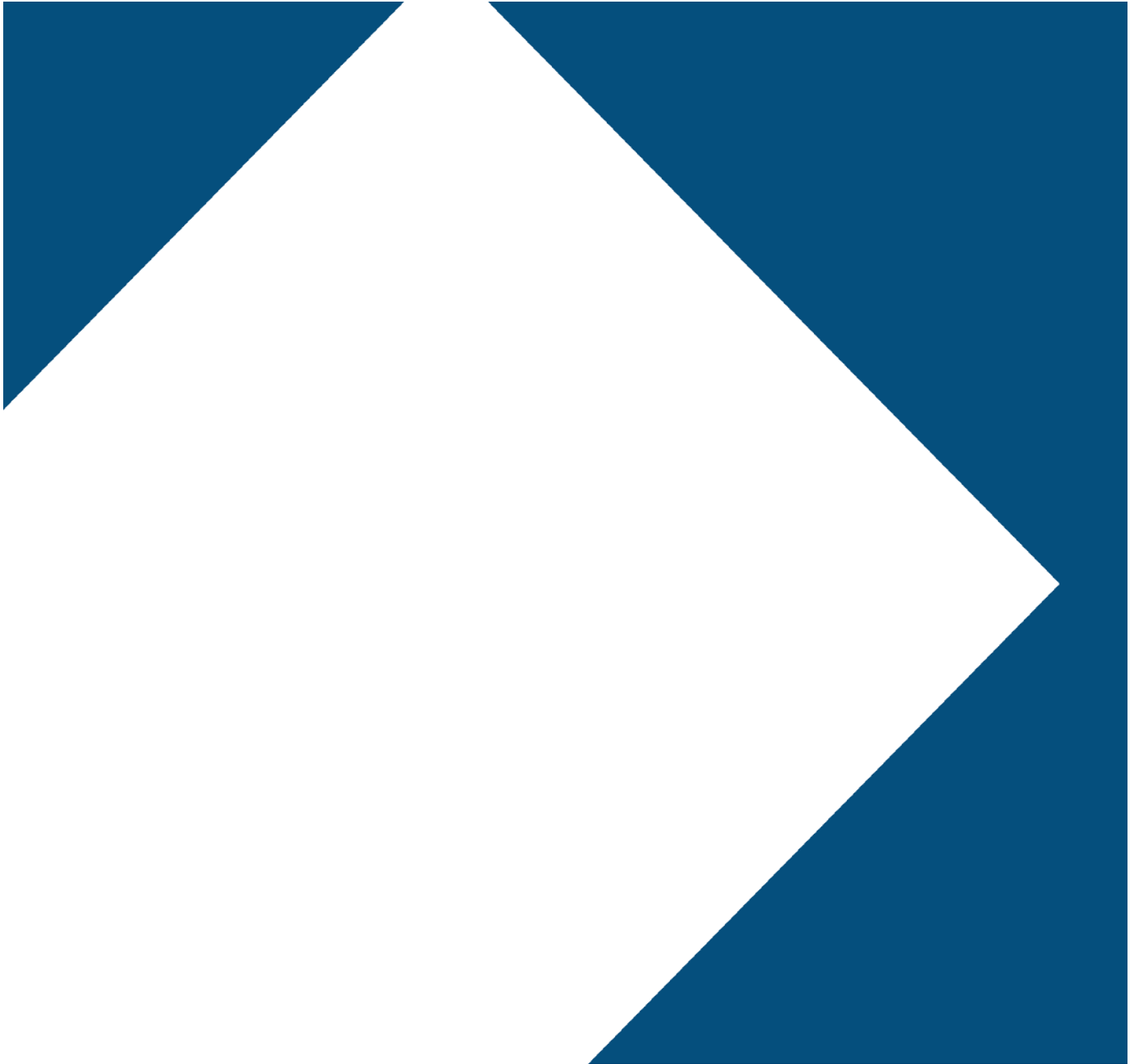
BRIAN CRAIG INTERIORS LLC SPECIFICATIONS

SHERYL FIDLER

5247 Newcastle Lane

Calabasas, CA 91302

Order: 1110774 "Appliances"



SNYDER DIAMOND

KITCHEN | BATH | FINE HARDWARE | EST. 1949

Michael Gillespie | Appliance Specialist
1399 Olympic Blvd. Santa Monica, CA 90404
310.450.1000 Ext. 1404
August 8, 2016

PRG486GDH 48-INCH GAS PRO HARMONY® RANGE WITH GRIDDLE

PROFESSIONAL SERIES, STANDARD-DEPTH, PORCELAIN COOKTOP SURFACE



Also Available:
PRL486GDH - LP

FEATURES & BENEFITS

- ★ - Exclusive, patented Star® Burner—most even heating, unsurpassed flame coverage
- ★ - QuickClean Base® designed for easy surface cleaning
- ★ - Precision simmering capabilities as low as 100°F (375 BTU) with 2 ExtraLow® Simmer burners
 - Professional style, continuous cast iron grates
 - Truly Flush Mounted™, 24" standard cabinet depth

TECHNICAL DETAILS

Circuit Breaker (A)	20 A
Volts (V)	120 V
Frequency (Hz)	60 Hz
Plug Type	120V-3 Prong NEMA 5-20
Power Cord Length (in)	72"
Energy Source	Gas
Gas Type	Natural Gas 15 mbar (USA)
Alternative Gas Type	Liquid Gas 27.5 mbar (USA)

SEE PAGE 2 FOR OPTIONAL ACCESSORIES

GENERAL PROPERTIES

Oven Capacity	4.4 / 2.3 cu. ft.
Cooking Modes - Main / Large Cavity	Bake, Convection Bake, Broil, Extended Bake
Cooking Modes - Small Cavity	Bake, Broil
Programs	Sabbath Function (Main)
Cleaning Type	N/A
Type of Grate	Continuous Cast Iron
Controls	Metal Knobs
Sealed Burners	Yes

OVEN PERFORMANCE

Bake Power	23,500 BTU (Lg) / 15,000 BTU (Sm) (NG)
Broil Power	20,000 BTU (Lg) / 7,500 BTU (Sm) (NG)
Convection Power	N/A

BURNER PERFORMANCE

Total Number of Cooktop Burners	6 + Griddle
Power of Front Left Burner BTU	18,000 and XLO (NG)
Power of Back Left Burner BTU	18,000 and XLO (NG)
Power of Back Center Burner BTU	18,000 (NG)
Power of Front Center Burner BTU	18,000 (NG)
Power of Center 12" Electric Griddle (W)	1,630 W
Power of Center 12" Electric Grill (W)	N/A
Power of Far Right 12" Electric Griddle (W)	N/A
Power of Back Right Burner BTU	18,000 (NG)
Power of Front Right Burner BTU	18,000 (NG)

DIMENSIONS & WEIGHT

Overall Appliance Dimensions (HxWxD) (in)	35 7/8" - 36 3/4" x 47 7/8" x 24 3/4"
Required Cutout Size (HxWxD) (in)	35 7/8" - 36 3/4" x 48" x 24"
Adjustable Range Height (in.)	7/8"
Net Weight (lbs)	565 lbs

ACCESSORIES (INCLUDED)

1 X Island Trim, 3 X Full Access Telescopic Racks, 2 X Telescopic Rack – Small, 1 X Broiler Pan, 1 X Broiler Pan Small

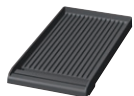
WARRANTY

Limited Warranty, Entire Appliance, Parts and Labor	2 Year
---	--------

PROFESSIONAL SERIES, STANDARD-DEPTH, PORCELAIN COOKTOP SURFACE



ACCESSORIES (OPTIONAL)



PA12GRILLN
Pro Grill



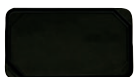
PA12CVRJ
12" Pro Griddle Cover

PWOKRINGHC
Wok Ring

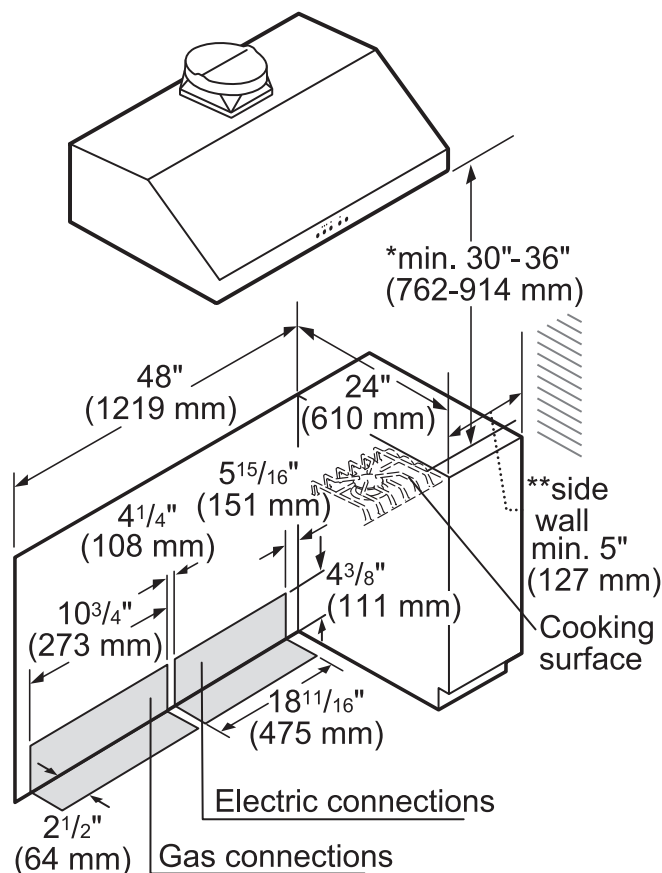
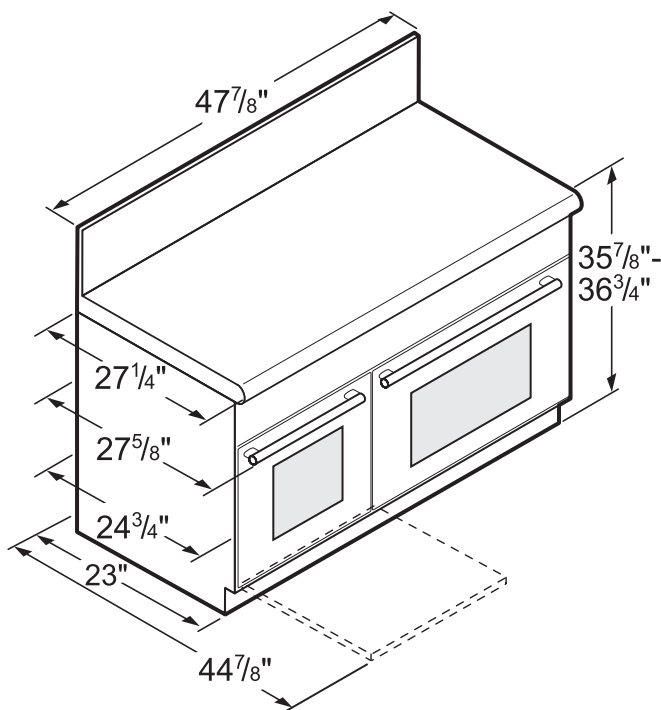
PA48GLBH
9" Low Backguard



PAKNOBLUNH
Blue Knob Pro Harmony Kit

PAGRIDDLE
Griddle

48-INCH RANGE CUTOUT DIMENSIONS



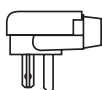
ELECTRICAL SUPPLY

IMPORTANT: The cord supplied with gas ranges having an electric griddle requires a NEMA 5-20 receptacle as shown here. Local codes may require a different wiring method.

NEMA 5-20
RECEPTACLE



PLUG



WARNING: This appliance is equipped with a three-prong grounding plug for protection against shock hazard and should be plugged directly into a properly grounded receptacle. DO NOT cut or remove the grounding prong from this plug. DO NOT ALTER THIS PLUG.

* 30" (762 mm) minimum clearance above cooking surface to non-combustible surface. Minimum clearance above cooking surface to combustible surface is 36" (914 mm).

**** 5" (127 mm) minimum clearance from sides of the cooker, above the cooking surface, to combustible side walls.**

Note: Most hoods contain combustible components that must be considered when planning the installation.

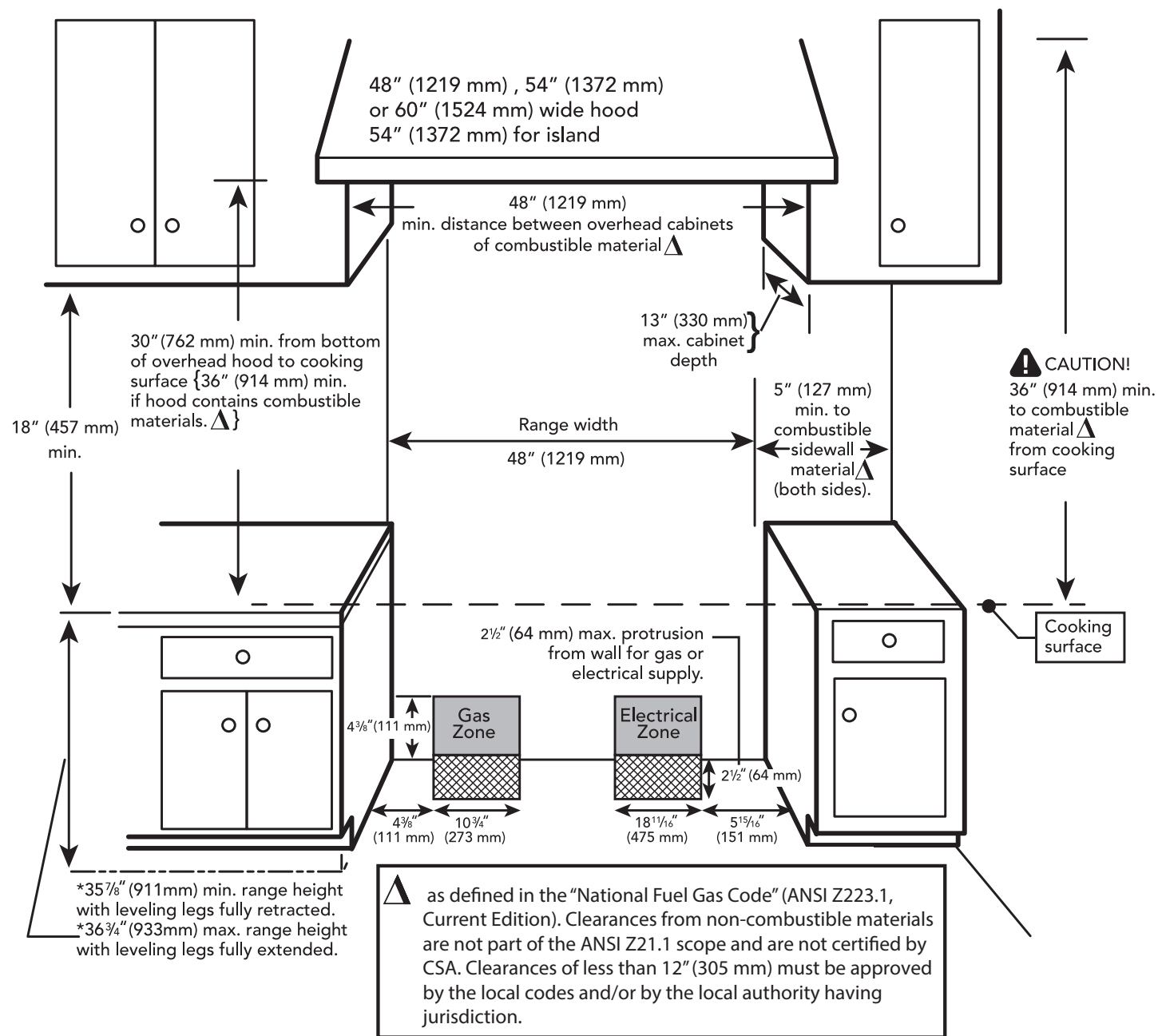
measurements in inches

PRG486GDH 48-INCH GAS PRO HARMONY® RANGE WITH GRIDDLE

PROFESSIONAL SERIES, STANDARD-DEPTH, PORCELAIN COOKTOP SURFACE



48-INCH RANGE CUTOUT DIMENSIONS



PRG486GDH

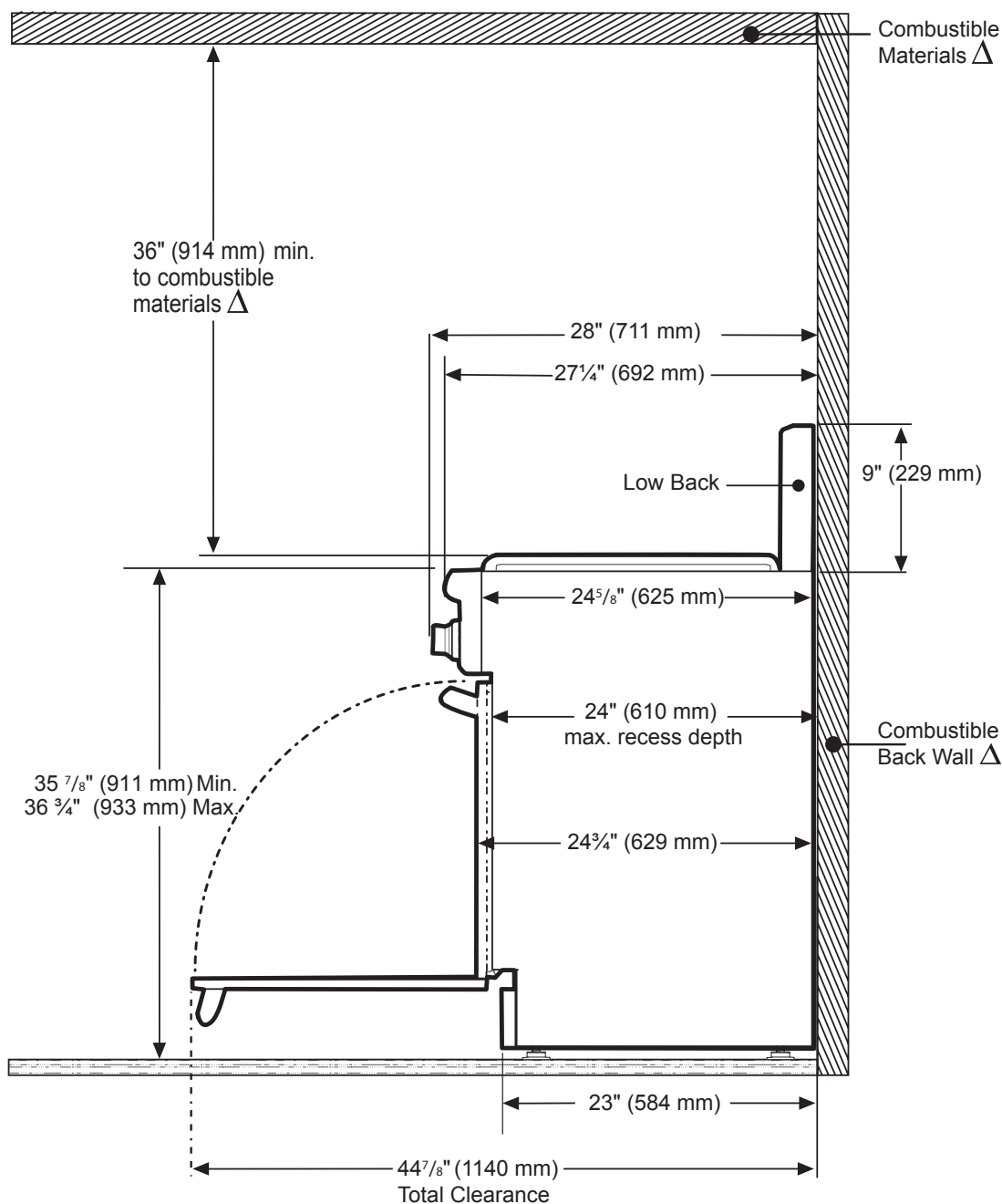
48-INCH GAS PRO HARMONY® RANGE WITH GRIDDLE

PROFESSIONAL SERIES, STANDARD-DEPTH, PORCELAIN COOKTOP SURFACE



48-INCH RANGE DIMENSIONS AND CLEARANCE REQUIREMENTS WITH "LOW BACK"

NOTE: A 36-inch minimum clearance is required between the top of the cooking surface and the bottom of an unprotected cabinet. A 30-inch clearance can be used when the bottom of the wood or metal cabinet is protected by not less than 1/4 inch of a flame retardant material covered with not less than No. 28 MSG sheet steel, 0.015 inch (0.4 mm) thick stainless steel, 0.024 inch (0.6 mm) aluminum, or 0.020 inch (0.5 mm) thick copper.



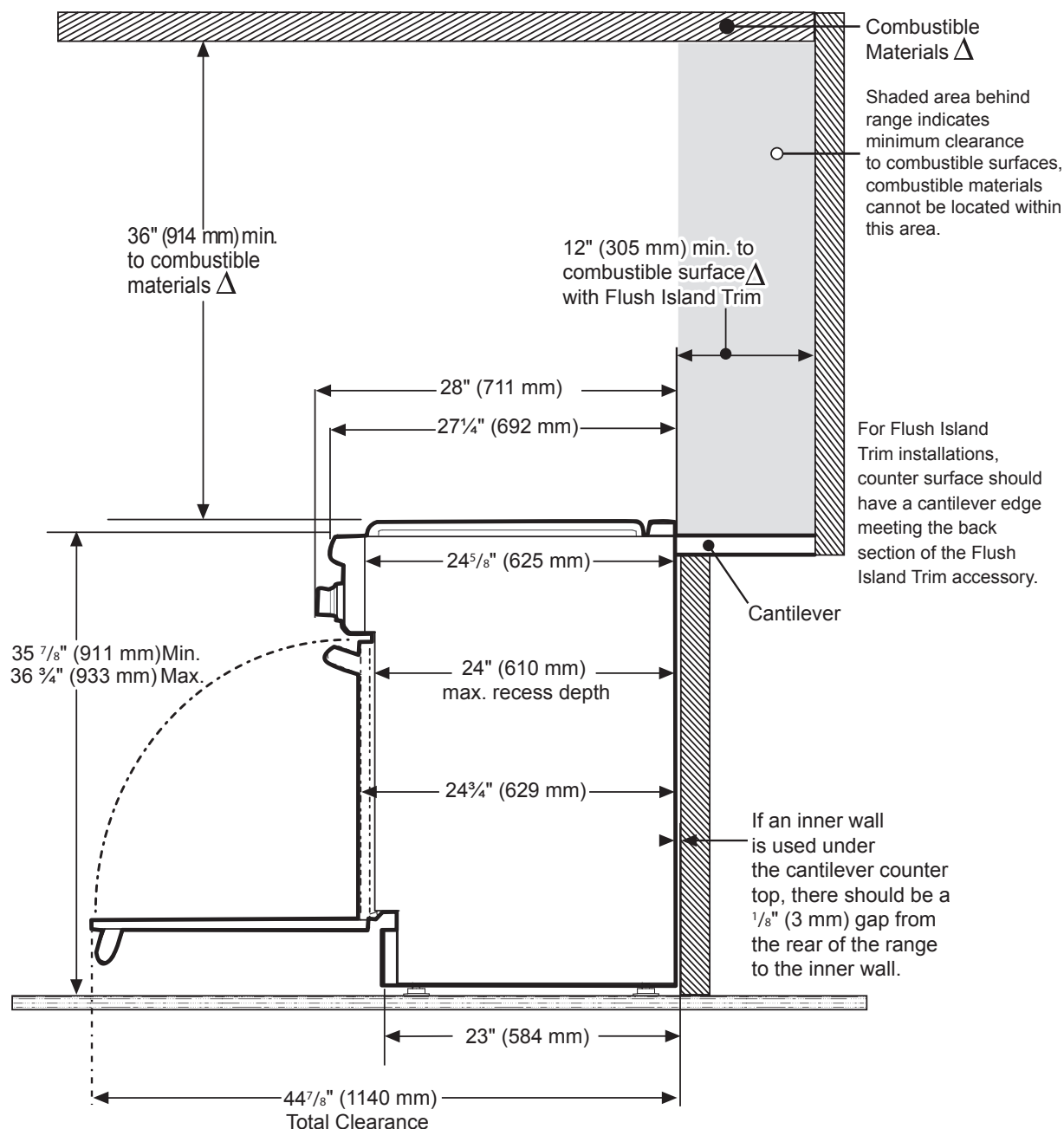
Δ As defined in the "National Fuel Gas Code" (ANSI Z223.1, Current Edition). Clearances from non-combustible materials are not part of the ANSI Z21.1 scope and are not certified by CSA. Clearances of less than 12" (305 mm) must be approved by the local codes and/or by the local authority having jurisdiction.

PRG486GDH 48-INCH GAS PRO HARMONY® RANGE WITH GRIDDLE

PROFESSIONAL SERIES, STANDARD-DEPTH, PORCELAIN COOKTOP SURFACE



48-INCH RANGE DIMENSIONS AND CLEARANCE REQUIREMENTS WITH "FLUSH ISLAND TRIM"



Δ As defined in the "National Fuel Gas Code" (ANSI Z223.1, Current Edition). Clearances from non-combustible materials are not part of the ANSI Z21.1 scope and are not certified by CSA. Clearances of less than 12" (305 mm) must be approved by the local codes and/or by the local authority having jurisdiction.

These warranties give you specific legal rights and you may have other rights that vary from state to state. Full warranty and limited warranty from date of installation. For complete warranty details, refer to your Use & Care manual, or ask your dealer.

Specifications are for planning purposes only. Refer to installation instructions and consult your countertop supplier prior to making counter opening. Consult with a heating and ventilation engineer for your specific ventilation requirements. For the most detailed information, refer to installation instructions accompanying product or write to Thermador indicating the model number. Specifications are correct at time of printing. Thermador reserves the right to change product specifications or design without notice. Some models are certified for use in Canada. Thermador is not responsible for products that are transported from the U.S. for use in Canada.

PODMW301J

30-INCH TRIPLE COMBINATION BUILT-IN OVEN

PROFESSIONAL SERIES



FEATURES & BENEFITS

- ★ - SoftClose® door ensures ultra smooth closing of the oven door
- ★ - Largest commercial style rotisserie with 12 pound capacity
- ★ - Maxbroil, the largest, most powerful broil element on the market
 - 2 Full Access® telescopic racks
 - No preheat Speed Convection mode

ACCESSORIES (OPTIONAL)



TLSCPRCK30
30-Inch Oven Telescopic Rack

* Valid for wall oven and warming drawer

★ THERMADOR EXCLUSIVE

GENERAL PROPERTIES

Modes – Upper Cavity	See MCES for Microwave Features
Modes – Lower Cavity	(14) Bake, Roast, True Convection, Convection Roast, No Preheat Speed Convection, Warm, Dehydrate, Rotisserie, Maxbroil®, Max Convection Broil, Cook Control™ Probe, Self Clean, Sabbath, Fast Preheat
Warming Drawer	See WD30JP for all Warming Drawer Details
Cleaning Type – Lower Cavity	Self Clean
Telescopic Rack(s)	2
Illumination Type – Upper & Lower Cavity	Halogen with SoftLight Function
Interior Lights – Upper & Lower Cavity	1 / 4

OVEN PERFORMANCE

Microwave Power	1,000 W
Bake / Broil Element Wattages – Lower Cavity	2,000 / 5,000 W
Convection Element Wattages – Lower Cavity	2,000 W
Warming Drawer Wattage	450 W

TECHNICAL DETAILS

Watts (W)	10,500 W
Circuit Breaker (A)	50 A
Volts (V); Frequency (Hz)	240 / 208 V; 60 Hz
Plug Type	Fixed Connection, No Plug
Conduit	66" Flexible 4-Wire
Energy Source	Electric

DIMENSIONS & WEIGHT

Overall Appliance Dimensions (HxWxD) (in)	61 3/8" x 29 3/4" x 23 7/8"
Required Cutout Size (HxWxD) (in)	60 3/4" x 28 1/2" x 24"
Microwave Cavity Size (cu. ft.)	1.5 cu. ft.
Oven Cavity Size – Upper / Lower Cavity (cu. ft.)	4.7 cu. ft.
Warming Drawer Cavity Size (cu. ft.)	2.6 cu. ft.
Overall Oven Interior Dimensions (HxWxD) (in)	17 7/8" x 25" x 17 7/8"
Usable Oven Interior Dimensions (HxWxD) (in)	12 3/4" x 22 3/4" x 17 1/4"
Net Weight (lbs)	324 lbs

ACCESSORIES (INCLUDED)

Upper Cavity: 1 Oven Rack, 1 Ceramic Glass Tray, 1 Roller Ring Lower Cavity: 2 Telescopic and 1 Standard Oven Rack, Temperature Probe, Broiler Pan, Rotisserie

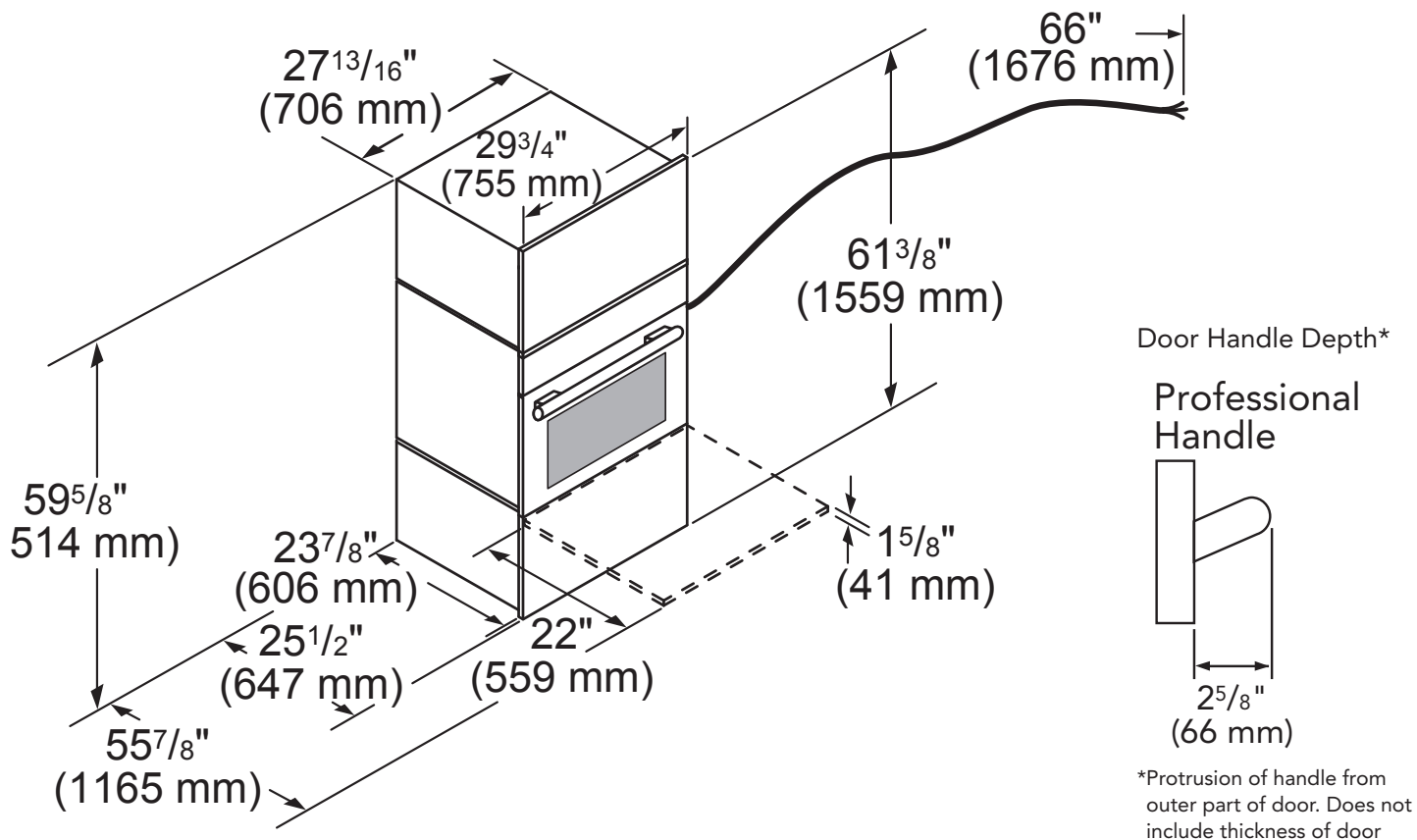
WARRANTY

Limited Warranty Parts and Labor	2 Year
----------------------------------	--------

PODMW301J
30-INCH TRIPLE COMBINATION BUILT-IN OVEN
 PROFESSIONAL SERIES



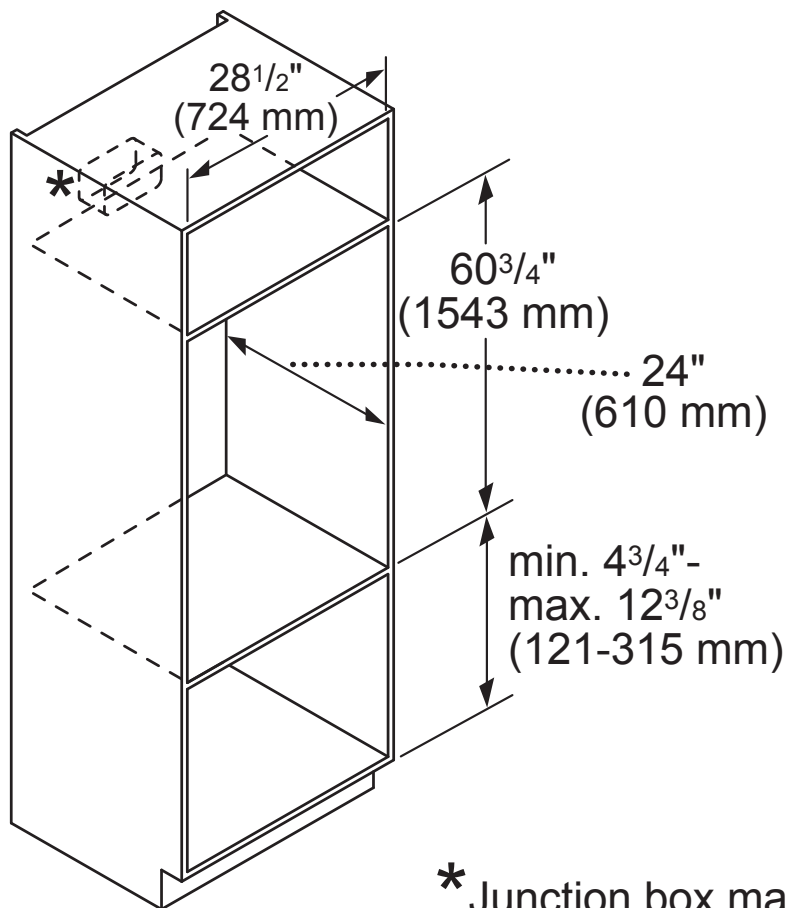
30-INCH TRIPLE COMBINATION OVEN WITH MICROWAVE AND WARMING DRAWER



PODMW301J
30-INCH TRIPLE COMBINATION BUILT-IN OVEN
PROFESSIONAL SERIES



30-INCH TRIPLE COMBINATION OVEN WITH MICROWAVE AND WARMING DRAWER



* Junction box may be installed above, or to the right of the unit within range of the power cable.

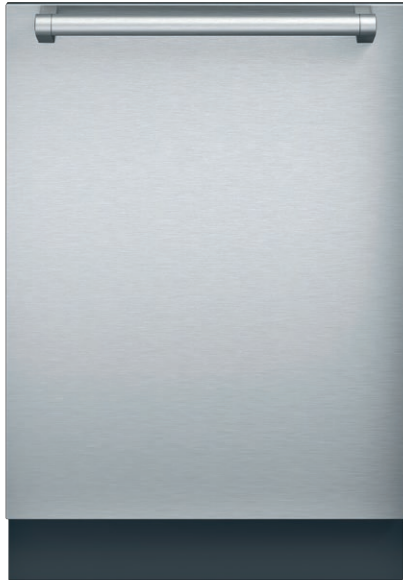
These warranties give you specific legal rights and you may have other rights that vary from state to state. Full warranty and limited warranty from date of installation. For complete warranty details, refer to your Use & Care manual, or ask your dealer.

Specifications are for planning purposes only. Refer to installation instructions and consult your countertop supplier prior to making counter opening. Consult with a heating and ventilation engineer for your specific ventilation requirements. For the most detailed information, refer to installation instructions accompanying product or write to Thermador indicating the model number. Specifications are correct at time of printing. Thermador reserves the right to change product specifications or design without notice. Some models are certified for use in Canada. Thermador is not responsible for products that are transported from the U.S. for use in Canada.

DWHD640JFP

TOPAZ® 6-PROGRAM DISHWASHER

PROFESSIONAL SERIES HANDLE



Also Available In:
 DWHD640JFM - Flat Stainless Steel Panel
 with Masterpiece® Series Handle
 DWHD640JPR - Custom Panel

FEATURES & BENEFITS

- ★ - Blue PowerBeam® operating indicator lets you know when dishwasher is running
- Crystal Protect® system adjusts the water softness during the cycle for perfectly clear crystal, free of water spots
- PowerBoost® option increases temperature and pressure in the lower rack for the ultimate performance in heavy-duty cleaning
- Sens-A-Wash® measures water cleanliness and adjusts wash cycle
- Extra Dry Option ensures perfectly dry dishes and sanitizes 99.9% of bacteria

ACCESSORIES (OPTIONAL)

Dishwasher Softener Salt (4.4 lbs)	SGZ9091UC
Dishwasher 3-Prong Power Cord 66 7/8"	SMZPC002UC
Dishwasher Supply and Drainage Hose Extension 76 3/4"	SGZ1010UC
Dishwasher Accessory Kit	SMZ5000
Fine Silverware Carafe	SMZ5002UC



Accessory Kit includes Extra-Tall-Item Sprinkler, Vase / Bottle Holder, 3 Plastic Item Clips and Small Item Basket



Fine Silverware Carafe

★ THERMADOR EXCLUSIVE

GENERAL PROPERTIES

Number Of Wash Cycles	6
Number Of Options	4
dBA	44
Third Rack	Chef's Tool Drawer®
Rack Adjustability	Rackmatic 3-Stage
Tub Material	Stainless Steel
Control Type	Buttons
Concealed Heating Element	Yes
Leak Protection System	24/7 AquaStop® Plus
Water Softener	Yes
Five-Level Wash	Yes
Childlock	No

EFFICIENCY

Water Usage Per Cycle (g)	2.2 g
Energy Efficiency Class	Tier 1
ENERGY STAR® Qualified	Yes
Total Annual Energy Consumption (kWh)	269 kWh
Total Annual Water Consumption (g)	613 g

CAPACITY

Number Of Place Settings	14
--------------------------	----

TECHNICAL DETAILS

Watts (W)	1,300 W
Current (A)	12 A
Volts (V)	120 V
Frequency (Hz)	60 Hz
Power Cord Length (in)	47 1/4"
Minimum Water Pressure (lb/sin)	7
Max. Temperature for Water Intake	140° F
Length Inlet Hose (in)	55 1/8"
Length Outlet Hose (in)	55 1/8"

DIMENSIONS & WEIGHT

Overall Appliance Dimensions (HxWxD) (in)	34 1/16" x 23 9/16" x 22 7/16"
Required Cutout Size (HxWxD) (in)	34 1/8" x 24" x 24"
Adjustable Feet	Yes
Net Weight (lbs)	102 lbs

ACCESSORIES (INCLUDED)

Baking-Sheet Spray Head Grey

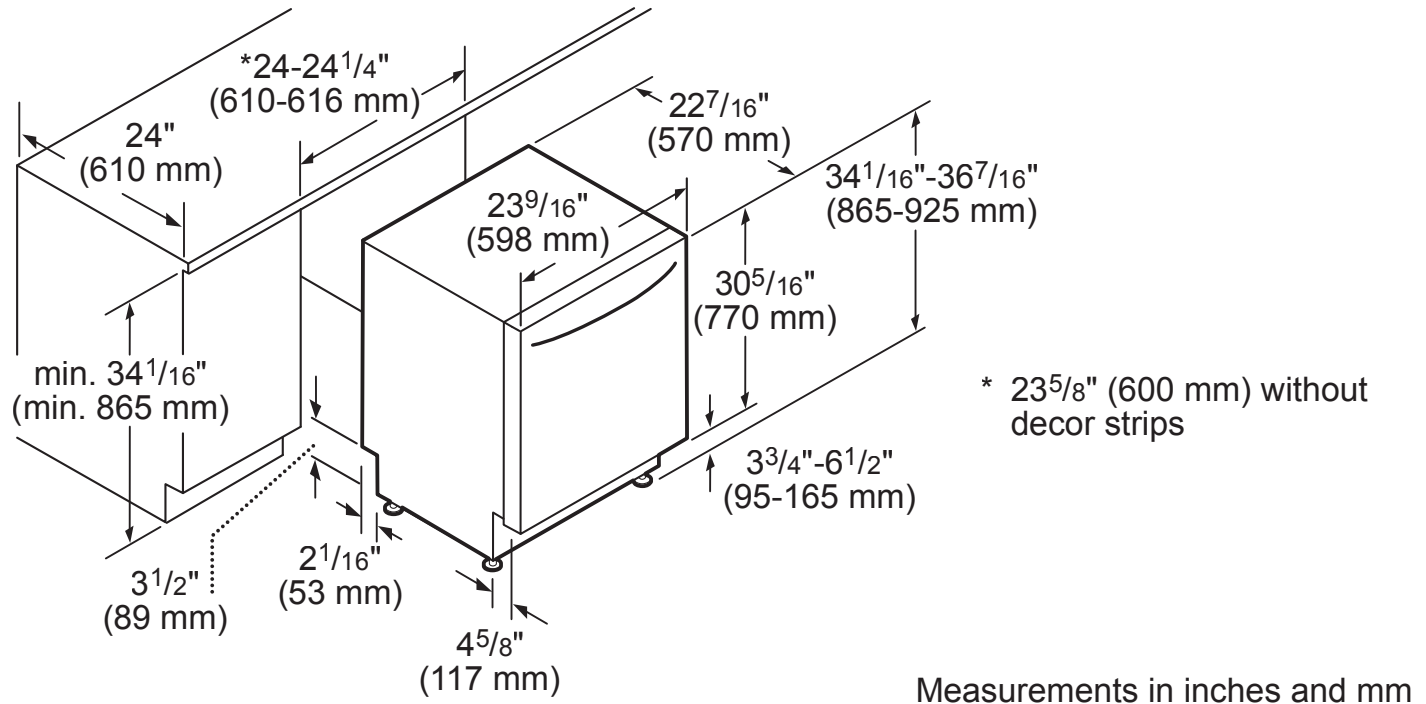
WARRANTY

Full Warranty, Entire Appliance, Parts and Labor	2 Year
Limited Warranty for Microprocessor or Printed Circuit Board; Parts Only	3rd to 5th Year
Limited Warranty for Racks (Does Not Include Rack Components); Parts Only	3rd to 5th Year
Limited Warranty for Rust-through On Inner Tub Liner; Parts Only	Lifetime

DWHD640JFP
TOPAZ® 6-PROGRAM DISHWASHER
 PROFESSIONAL SERIES HANDLE



DISHWASHER & CUTOUT DIMENSIONS



These warranties give you specific legal rights and you may have other rights that vary from state to state. Full warranty and limited warranty from date of installation. For complete warranty details, refer to your Use & Care manual, or ask your dealer.

Specifications are for planning purposes only. Refer to installation instructions and consult your countertop supplier prior to making counter opening. Consult with a heating and ventilation engineer for your specific ventilation requirements. For the most detailed information, refer to installation instructions accompanying product or write to Thermador indicating the model number. Specifications are correct at time of printing. Thermador reserves the right to change product specifications or design without notice. Some models are certified for use in Canada. Thermador is not responsible for products that are transported from the U.S. for use in Canada.

T30IR800SP

30-INCH FLUSH CUSTOM FRESH FOOD COLUMN

FREEDOM® COLLECTION, PANEL-READY



FEATURES & BENEFITS

- Freedom® Hinge enables true flush design
- Full-height door—true cabinet integration without exposed venting grille
- Brightspace interior design with All-LED sidewall and theater lighting
- FLEXTemp® drawer providing the ultimate in preservation
- Accepts custom or stainless steel panels

TEMPERATURE RANGES

Refrigerator	35°F (2°C) to 46°F (8°C)
Temperature Controlled Drawer	Fish 32°F (0°C) Meat 35°F (1.5°C) Produce 37°F (3°C)
Deli Drawer	Just above 32°F (0°C)
SuperCool	35.5°F (2°C) for approximately 9 hours
Energy Saving (Economy) Mode	45°F (7°C)

ACCESSORIES (OPTIONAL)

Stainless Steel Panel Options:
TFL30IR800 - Flat Stainless Steel
 TCH30IR800 - Chiseled Stainless Steel

Handle Options:
 PR36HNDL10 - 36-Inch Professional
 MS36HNDL10 - 36-Inch Masterpiece®
 FRAMEKIT10 - Freedom® Frame Kit
 HEATRKIT10 - Freedom® Heater Kit

GENERAL PROPERTIES

Panel Ready	Yes
Reversible Door Swing	Yes
Carbon Air Filter	Yes
Lighting	All-LED Sidewall and Theater Lighting
Full Width Shelves	4
Adjustable Shelves	3
Shelf Material	Glass w/Metal Trim
Full Extension Drawers at 90° Door Opening Angle	Yes
Temperature Controlled Drawer	Yes
Humidity Control Drawer	Yes
Door Bins	4
Gallon Door Bins	Yes
Door Open Alarm	Yes
Special Modes	Sabbath, Economy, Vacation

CAPACITY

Total Unit Gross Capacity (cu. ft.) - AHAM	17.2 cu. ft.
Refrigerator Gross Capacity (cu. ft.)	17.2 cu. ft.

PERFORMANCE

Dedicated Evaporator & Compressor System	Yes
Freeflow® Cold Air System	Yes
SuperCool	Yes

TECHNICAL DETAILS

Watts (W)	180 W
Current (A)	15 A
Volts (V)	120 V
Frequency (Hz)	60 Hz
Power Cord Length (in.)	78 3/4"
Plug Type	120V 3-Wire

DIMENSIONS & WEIGHT

Appliance Dimensions (H x W x D) (in.)	84" x 29 3/4" x 24"
Required Cutout Size (H x W x D) (in.)	84" x 30" x 24 3/4"
Net Weight (lbs)	332 lbs

EFFICIENCY

ENERGY STAR® Qualified	Yes
Annual Energy Consumption	310 kWh

WARRANTY

Limited, Entire Appliance, Parts and Labor on Any Part of the Refrigerator that Fails Because of a Manufacturing Defect	2 Year
Limited Warranty for Sealed Refrigeration System*; Parts and Labor	3rd to 6th Year
Limited Warranty for Sealed Refrigeration System*; Parts Only	7th to 12th Year

* Sealed refrigeration system includes compressor, evaporator, condenser, dryer / strainer and connection tubing

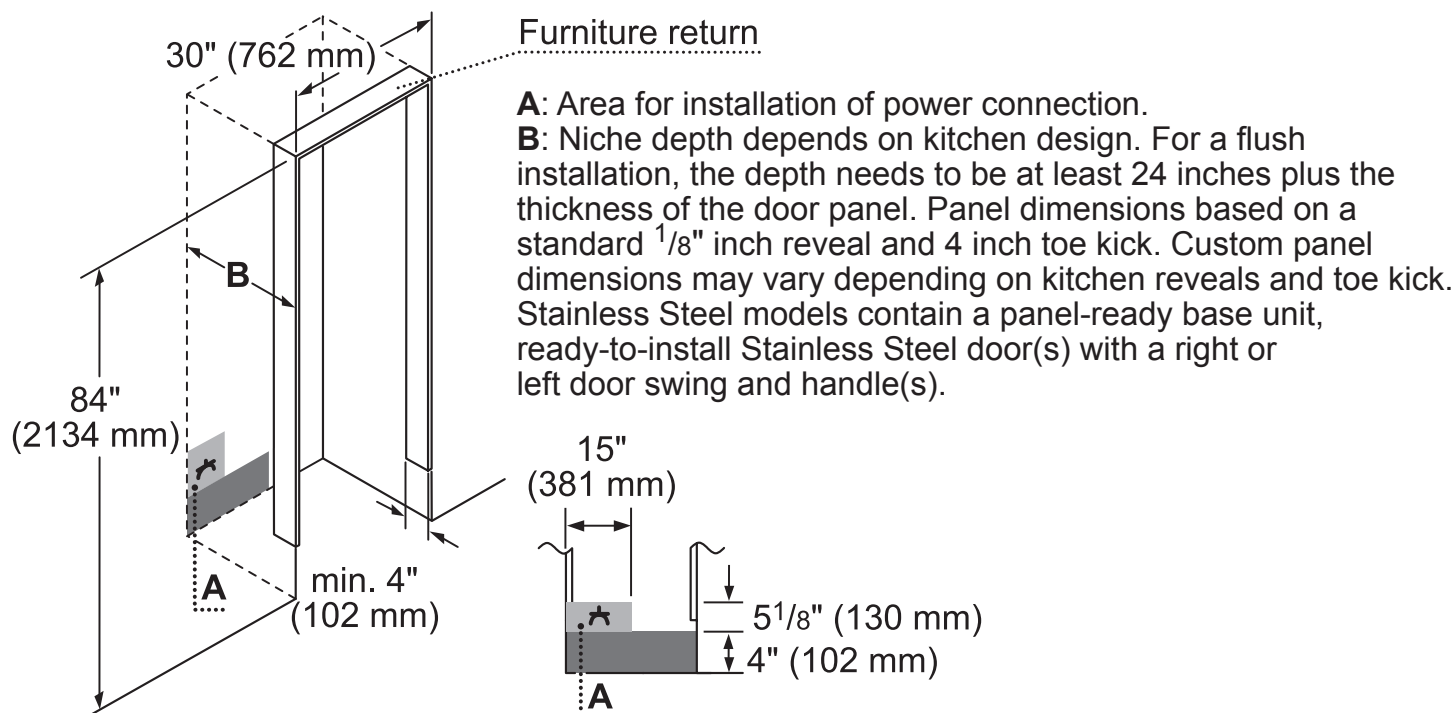
T30IR800SP

30-INCH FLUSH CUSTOM FRESH FOOD COLUMN

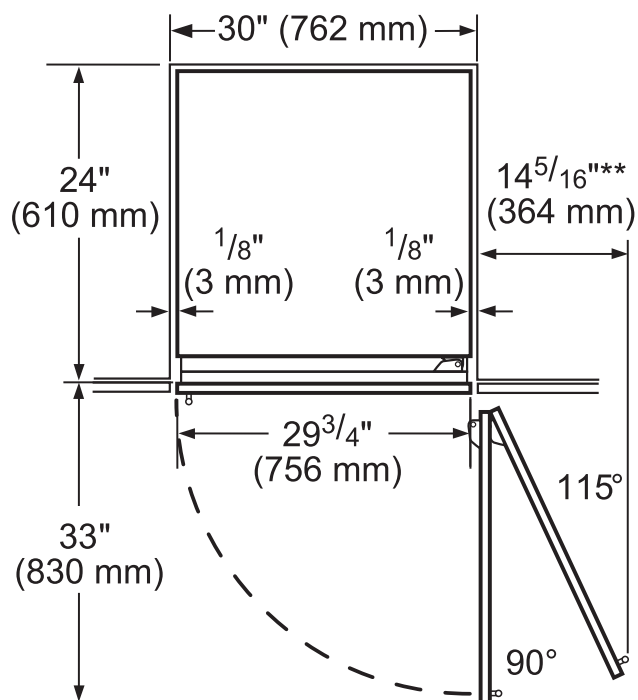
FREEDOM® COLLECTION, PANEL-READY



CUTOUT DIMENSIONS

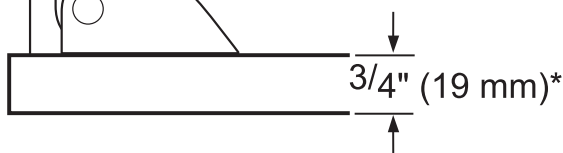


TOP VIEW CLEARANCE



** Door handle must be added to this dimension

* Depends on the thickness of the furniture door.
 $\frac{3}{4}$ " (19 mm) is relevant for the stainless steel door. (special Accessory).



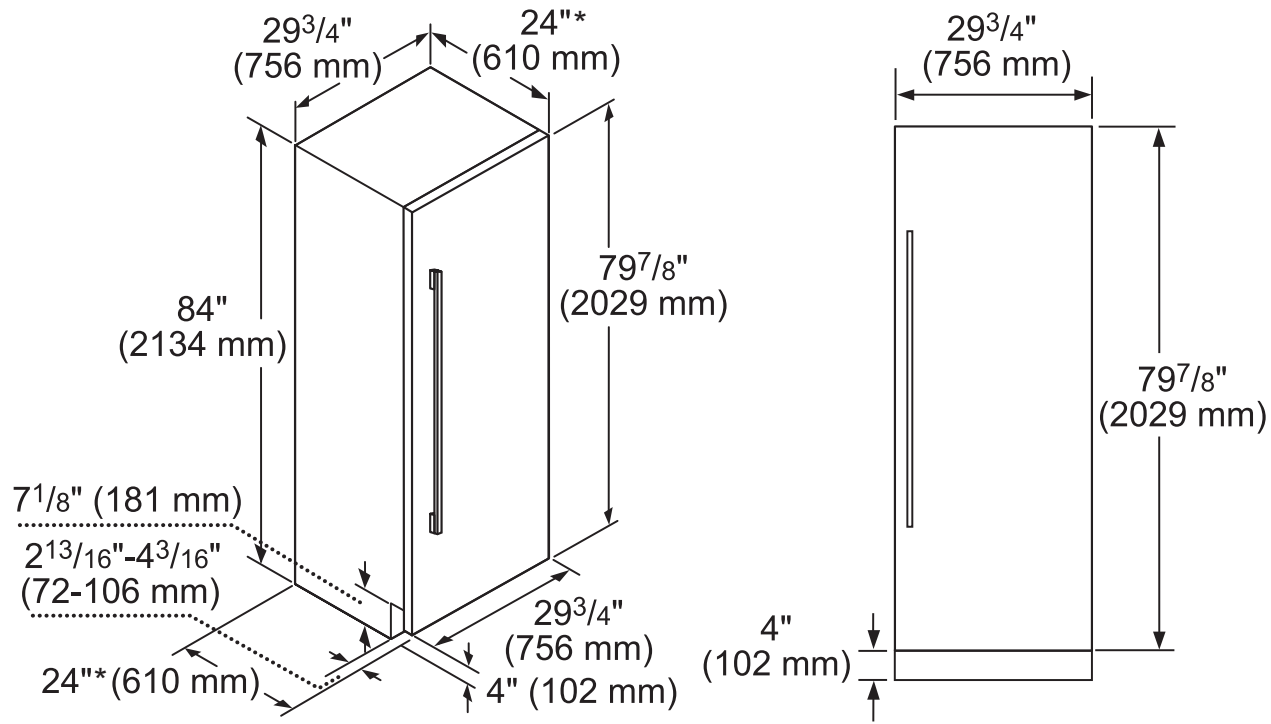
T30IR800SP

30-INCH FLUSH CUSTOM FRESH FOOD COLUMN

FREEDOM® COLLECTION, PANEL-READY



PANEL DIMENSIONS



*Excludes thickness of door panel. If standard panel with $\frac{3}{4}"$ thickness is mounted, total depth is $24\frac{3}{4}"$.

These warranties give you specific legal rights and you may have other rights that vary from state to state. Full warranty and limited warranty from date of installation. For complete warranty details, refer to your Use & Care manual, or ask your dealer.

Specifications are for planning purposes only. Refer to installation instructions and consult your countertop supplier prior to making counter opening. Consult with a heating and ventilation engineer for your specific ventilation requirements. For the most detailed information, refer to installation instructions accompanying product or write to Thermador indicating the model number. Specifications are correct at time of printing. Thermador reserves the right to change product specifications or design without notice. Some models are certified for use in Canada. Thermador is not responsible for products that are transported from the U.S. for use in Canada.

T18IF800SP

18-INCH FLUSH FREEZER COLUMN WITH INTERNAL ICE MAKER

FREEDOM® COLLECTION, PANEL-READY, REVERSIBLE DOOR SWING



FEATURES & BENEFITS

- Freedom® Hinge enables true flush design
- Full-height door—true cabinet integration without exposed venting grille
- All-LED sidewall and theater lighting
- Brightspace interior design
- Accepts custom or stainless steel panels

TEMPERATURE RANGES

Freezer	-9°F (-23°C) to 7°F (-14°C)
SuperFreeze®	-9°F (-23°C) for approximately 52 hours
Energy Saving (Economy) Mode	3°F (-16°C)

ACCESSORIES (OPTIONAL)

Stainless Steel Panel Options:

TFL18IR800 - Flat Stainless Steel Panel

TCH18IR800 - Chiseled Stainless Steel Panel

Handle Options:

PR36HNDL10 - 36-Inch Professional

MS36HNDL10 - 36-Inch Masterpiece®

FRAMEKIT10 - Freedom® Frame Kit

HEATRKIT10 - Freedom® Heater Kit

Filters:

REPLFLTR10 - Freedom® Water Filter

SCRNFLTR10 - Filter By-Pass

GENERAL PROPERTIES

Panel Ready	Yes
Reversible Door Swing	Yes
Lighting	All-LED Sidewall and Theater Lighting
Full Width Shelves	3
Adjustable Shelves	3
Shelf Material	Metal
Full Extension Drawers at 90° Door Opening Angle	Yes
Door Bins	5
Ice Maker	Yes
Door Open Alarm	Yes
Special Modes	Sabbath, Economy, Vacation

CAPACITY

Total Unit Gross Capacity (cu. ft.) - AHAM	8.6 cu. ft.
Freezer Gross Capacity (cu. ft.)	8.6 cu. ft.

PERFORMANCE

Dedicated Evaporator & Compressor System	Yes
SuperFreeze®	Yes
Defrost Process	Frost-Free

TECHNICAL DETAILS

Watts (W)	367 W
Current (A)	15 A
Volts (V), Frequency (Hz)	120 V, 60 Hz
Power Cord Length (in.)	78 3/4"
Plug Type	120V-3 Prong

DIMENSIONS & WEIGHT

Appliance Dimensions (H x W x D) (in.)	84" x 17 3/4" x 24"
Required Cutout Size (H x W x D) (in.)	84" x 18" x 24 3/4"
Net Weight (lbs)	261 lbs

EFFICIENCY

ENERGY STAR® Qualified	Yes
Annual Energy Consumption	443 kWh

WARRANTY

Limited, Entire Appliance, Parts and Labor on Any Part of the Refrigerator that Fails Because of a Manufacturing Defect	2 Year
Limited Warranty for Sealed Refrigeration System*; Parts And Labor	3rd to 6th Year
Limited Warranty for Sealed Refrigeration System*; Parts Only	7th to 12th Year

* Sealed refrigeration system includes compressor, evaporator, condenser, dryer / strainer and connection tubing

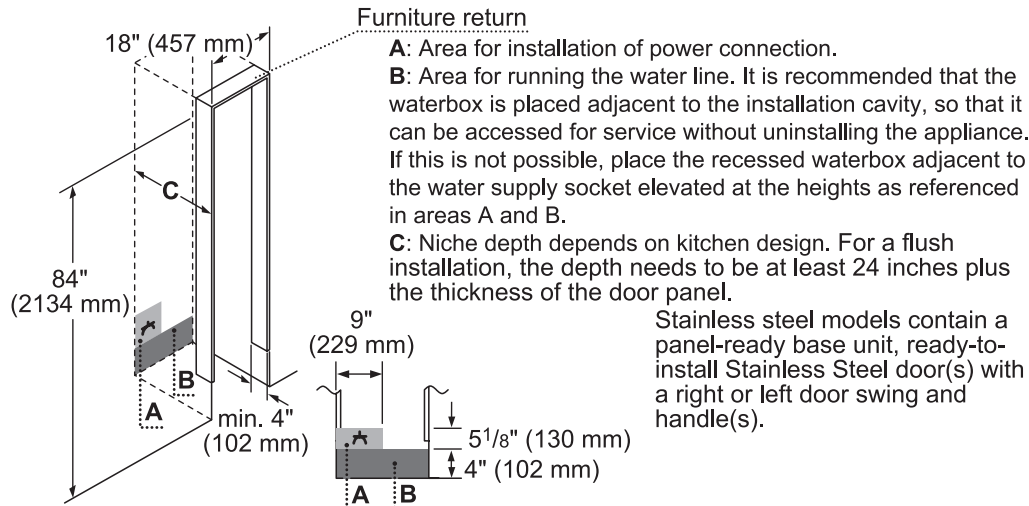
T18IF800SP

18-INCH FLUSH FREEZER COLUMN WITH INTERNAL ICE MAKER

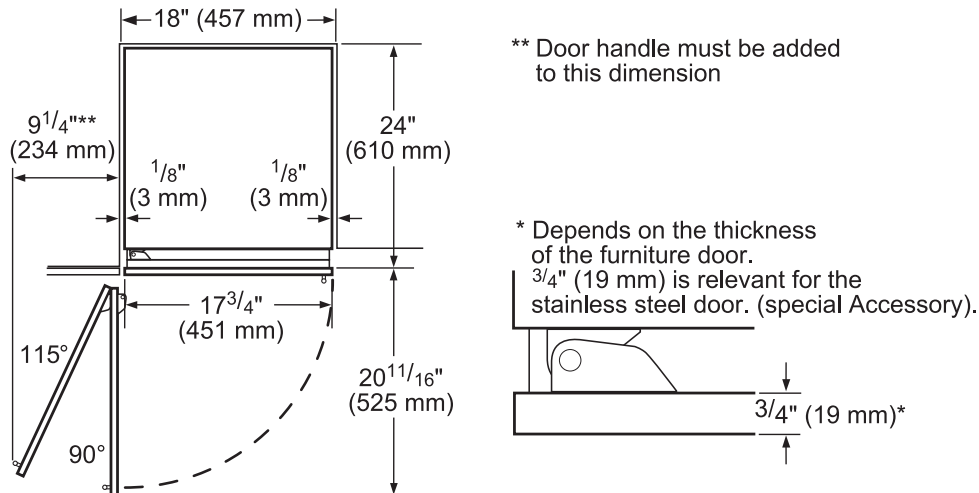
FREEDOM® COLLECTION, PANEL-READY, REVERSIBLE DOOR SWING



CUTOUT DIMENSIONS



TOP VIEW CLEARANCE



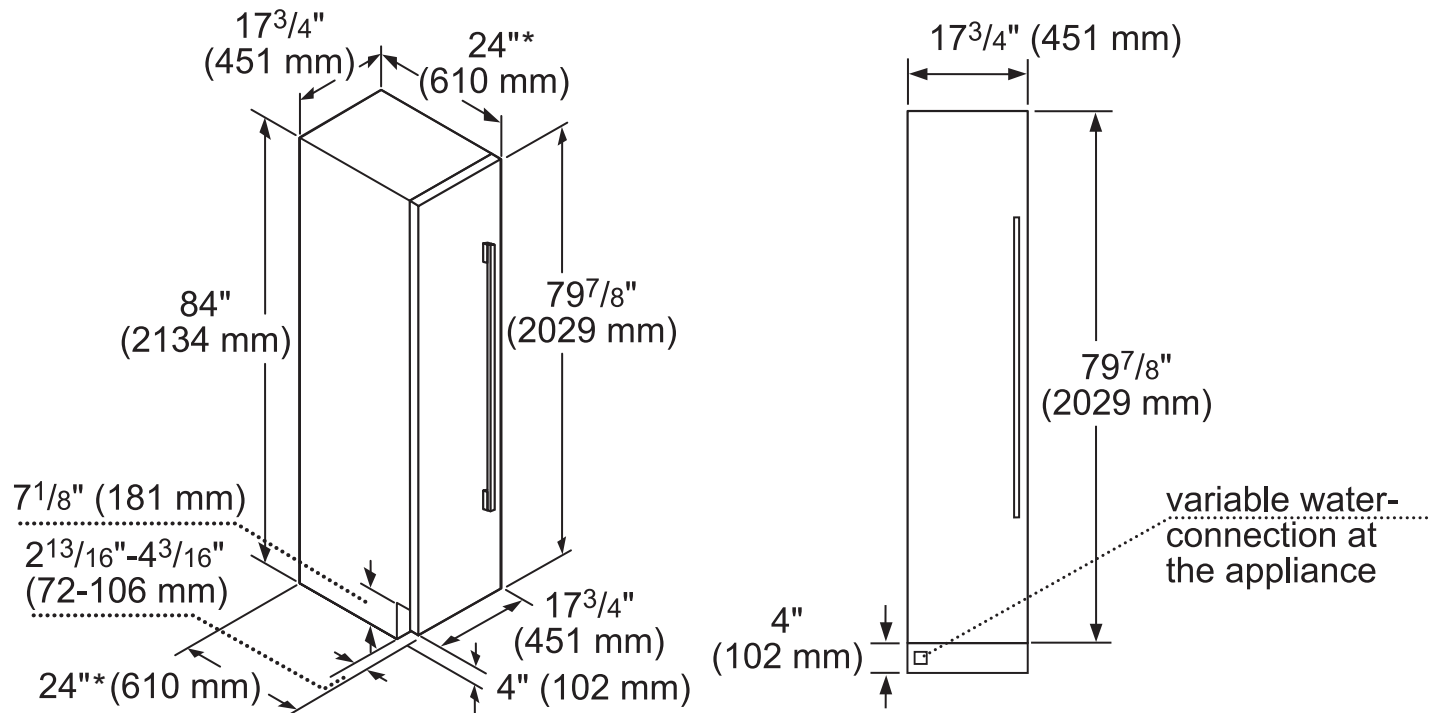
T18IF800SP

18-INCH FLUSH FREEZER COLUMN WITH INTERNAL ICE MAKER

FREEDOM® COLLECTION, PANEL-READY, REVERSIBLE DOOR SWING



PANEL DIMENSIONS



*Excludes thickness of door panel. If standard panel with $\frac{3}{4}"$ thickness is mounted, total depth is $24\frac{3}{4}"$.

These warranties give you specific legal rights and you may have other rights that vary from state to state. Full warranty and limited warranty from date of installation. For complete warranty details, refer to your Use & Care manual, or ask your dealer.

Specifications are for planning purposes only. Refer to installation instructions and consult your countertop supplier prior to making counter opening. Consult with a heating and ventilation engineer for your specific ventilation requirements. For the most detailed information, refer to installation instructions accompanying product or write to Thermador indicating the model number. Specifications are correct at time of printing. Thermador reserves the right to change product specifications or design without notice. Some models are certified for use in Canada. Thermador is not responsible for products that are transported from the U.S. for use in Canada.

Professional Series Model PS19



Shown with optional rounded duct front duct cover

MODERN-AIRE'S PROFESSIONAL SERIES RANGE HOODS

are manufactured to ventilate today's demanding residential commercial ranges. All PS series hoods include your choice of centrifugal blower motors ranging from 600 cfm to 1200 cfm internally. PS series canopies can also be ordered for use with an inline 1266 cfm fan or a exterior 1400 cfm roof or wall mounted blower unit. Infinite speed control provides total control over you ventilation needs. Bright beautiful halogen lighting provides full cooktop illumination and is standard on all PS series range hoods. You control the amount of lighting you need, from full bright to a safety light at night with a built in dimmer control switch. PS series hoods also include baffle filters to extract grease while preventing the passage of flames into the interior of the hood.

Stainless Steel, Powder Coat, Copper, Brass, Oil Rubbed Bronze, Blackened Steel

Dishwasher Safe 300 Series Stainless Steel Baffle Filters

Simulated Seamless Construction

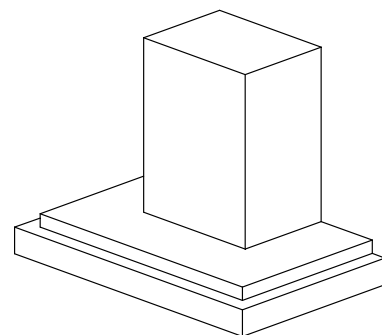
Infinite Speed Motor Control

Dimmer Controlled Halogen Lighting

Top Vent or Rear Vent

Ductless/ Recirculating Configuration Available

Can Be Custom Manufactured to Meet The Exact Requirements Of Your Kitchen

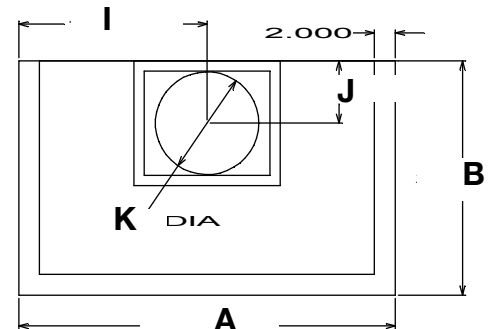
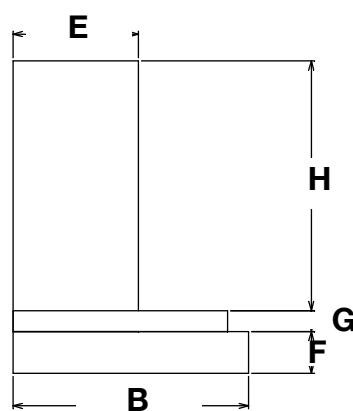
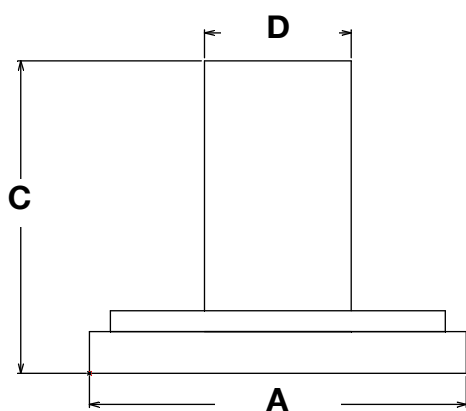


17 of 22

Professional Series Model PS19

PROFESSIONAL SERIES VENTILATION CANOPY SPECIFICATIONS 115V 10A 60HZ

MODEL #	A	B	C	D	E	F	G	H	I	J	K	CFM	AMPS
PS1930-130	30"	24"	30"	16"	14"	4"	2"	24"	15"	4 1/2"	6 7/8"	400	5A
PS1930-136	36"	24"	30"	16"	14"	4"	2"	24"	18"	4 1/2"	6 7/8"	400	5A
PS1930-142	42"	24"	30"	16"	14"	4"	2"	24"	21"	4 1/2"	6 7/8"	400	5A
PS1930-148	48"	24"	30"	16"	14"	4"	2"	24"	24"	4 1/2"	6 7/8"	400	5A
PS1930-230	30"	24"	30"	16"	14"	4"	2"	24"	15"	5"	7 7/8"	600	5A
PS1930-236	36"	24"	30"	16"	14"	4"	2"	24"	18"	5"	7 7/8"	600	5A
PS1930-242	42"	24"	30"	16"	14"	4"	2"	24"	21"	5"	7 7/8"	600	5A
PS1930-248	48"	24"	30"	16"	14"	4"	2"	24"	24"	5"	7 7/8"	600	5A
PS1930-330	30"	24"	30"	24"	14"	4"	2"	24"	15"	6"	9 7/8"	1200	8A
PS1930-336	36"	24"	30"	24"	14"	4"	2"	24"	18"	6"	9 7/8"	1200	8A
PS1930-342	42"	24"	30"	24"	14"	4"	2"	24"	21"	6"	9 7/8"	1200	8A
PS1930-348	48"	24"	30"	24"	14"	4"	2"	24"	24"	6"	9 7/8"	1200	8A
PS1930-354	54"	24"	30"	24"	14"	4"	2"	24"	27"	6"	9 7/8"	1200	8A
PS1930-030	30"	24"	30"	16"	14"	4"	2"	24"	15"	6"	9 7/8"	**	10A
PS1930-036	36"	24"	30"	16"	14"	4"	2"	24"	18"	6"	9 7/8"	**	10A
PS1930-042	42"	24"	30"	16"	14"	4"	2"	24"	21"	6"	9 7/8"	**	10A
PS1930-048	48"	24"	30"	16"	14"	4"	2"	24"	24"	6"	9 7/8"	**	10A
PS1930-054	54"	24"	30"	16"	14"	4"	2"	24"	27"	6"	9 7/8"	**	10A
PS1930-060	60"	24"	30"	16"	14"	4"	2"	24"	30"	6"	9 7/8"	**	10A



18 of 22

**FOR USE WITH EXTERIOR OR INLINE BLOWERS
CFM BASED UPON CONNECTED BLOWERS OUTPUT

KITCHENAID® 24" WINE CELLAR WITH GLASS DOOR AND METAL-FRONT RACKS



KUWL304ESS

KitchenAid® 24" Wine Cellar with Glass Door and Metal-Front Racks

Available Colors

Stainless Steel

KUWL304ESS

External Dimensions

Dimensions shown are for planning purposes only.
For complete information, see Installation
Instructions packed with product.

Height	35 1/8
Depth	26 3/4
Width	23 3/4
Height To Top Of Cabinet	35 1/8
Depth With Door Open 90 Degree	47 3/4
Depth Excluding Doors	22
Depth Closed Including Handles	26 3/4
Width of Cabinet Only	23 3/4

Key Features

Two Temperature-Controlled Zones (For Wine Cellar)

46 Wine Bottle Capacity

Professionally-Inspired Design

SatinGlide® Metal-Front Racks

Stainless Steel Cabinet and Base Grille

UV-Protected Thermal Glass Door

Auto Light Interior LED Lighting

Touch Controls

Built-In or Freestanding Installation

Over-Temp Alarm

Door Alarm

Wine Cellar

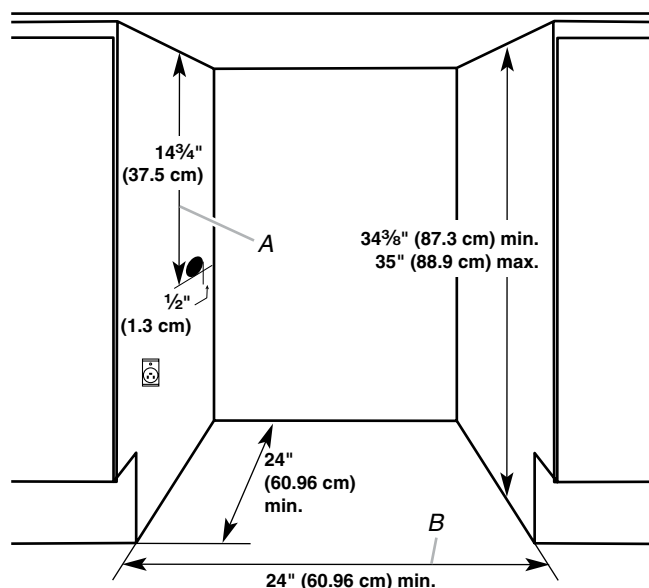
PRODUCT MODEL NUMBERS

KUWL204E KUWL304E
KUWR204E KUWR304E

Electrical: A 115 volt, 60 Hz., AC only, 15- or 20-amp fused, grounded electrical supply is required. It is recommended that a separate circuit serving only your wine cellar be provided. Use an outlet that cannot be turned off by a switch. Do not use an extension cord.

NOTE: Before performing any type of installation, cleaning, or removing a light bulb, unplug wine cellar or disconnect power.

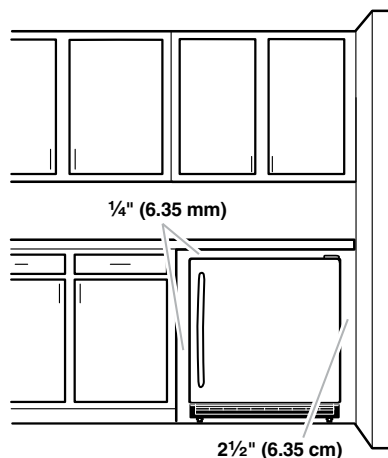
OPENING DIMENSIONS



A. $14\frac{3}{4}"$ (37.5 cm) utility opening
B. $24"$ (60.96 cm) minimum opening width

- Height dimensions are shown with the leveling legs extended to the minimum height.
NOTE: When leveling legs are fully extended, add $\frac{5}{8}"$ (15 mm) to the height dimensions.
- If the floor of the opening is not level with the kitchen floor, shim the opening to make it level with the kitchen floor.

LOCATION REQUIREMENTS



- For the wine cellar to be flush with the front of the base cabinets, remove any baseboards or moldings from the rear of the opening. See "Opening Dimensions" later in this section.
- It is recommended that you do not install the wine cellar near an oven, radiator, or other heat source.
- Do not install in a location where the temperature will fall below 55°F (13°C). For best performance, do not install the wine cellar behind a cabinet door or block the base grille.

KITCHENAID® 24" UNDERCOUNTER REFRIGERATOR WITH GLASS DOOR AND METAL TRIM SHELVES



KURR304ESS

KitchenAid® 24" Undercounter Refrigerator with Glass Door and Metal Trim Shelves

Available Colors

Stainless Steel

KURR304ESS

External Dimensions

Dimensions shown are for planning purposes only.
For complete information, see Installation
Instructions packed with product.

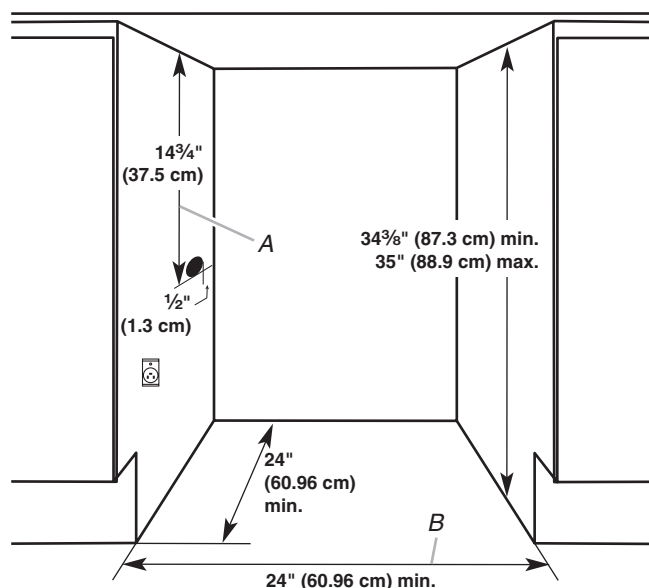
Depth	26 3/4
Height	35 1/8
Width	23 3/4
Cutout Depth	24
Cutout Height	34 5/8
Cutout Width	24
Height To Top Of Cabinet	35 1/8
Depth with Door Open 90 Degrees	47
Depth Excluding Doors	22
Depth Closed Excluding Handles	24 3/8

Key Features

5.1 Cu. Ft. Capacity
Auto-Light Interior LED Lighting
Professionally-Inspired Design
UV-Protected Thermal Glass Door
Stainless Steel Cabinet and Base Grille
Touch Controls
Glass shelf/shelves with metal trim
Built-In or Freestanding Installation
Door Alarm
Over-Temp Alarm

OPENING DIMENSIONS

Electrical: A 115 volt, 60 Hz., AC only, 15- or 20-amp fused, grounded electrical supply is required. It is recommended that a separate circuit serving only your refrigerator be provided. Use an outlet that cannot be turned off by a switch. Do not use an extension cord.

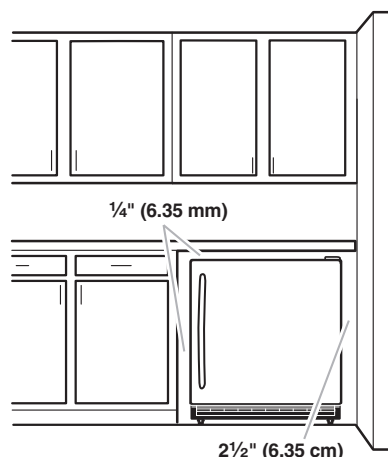


Critical Dimensions:
A. 14¾" (37.5 cm) utility opening
B. 24" (60.96 cm) minimum opening width

- Height dimensions are shown with the leveling legs extended to the minimum height.
NOTE: When leveling legs are fully extended, add $\frac{5}{8}$ " (15 mm) to the height dimensions.
- If the floor of the opening is not level with the kitchen floor, shim the opening to make it level with the kitchen floor.

Model	Door Swing
KURL204E KURL304E	Left
KURR204E KURR304E	Right

LOCATION REQUIREMENTS



To ensure proper ventilation for your refrigerator, allow for a ¼" (6.35 mm) space on each side and at the top. When installing your refrigerator next to a fixed wall, leave 2½" (6.35 cm) minimum clearance on the hinge side to allow for the door to swing open.

- **NOTE:** It is recommended that you do not install the refrigerator near an oven, radiator, or other heat source. Do not install in a location where the temperature will fall below 55°F (13°C). For best performance, do not install the refrigerator behind a cabinet door or block the base grille.